

## Hyperlink Manager (CTRL+K)

### Hyperlink Manager

Click on the Hyperlink Manger Button (Ctrl + K). The hyperlink tab is pre-selected for you.

### Linking Any Type of Link

Highlight the text/object for the link - OR - Place your cursor where you want to insert the link. See example above.

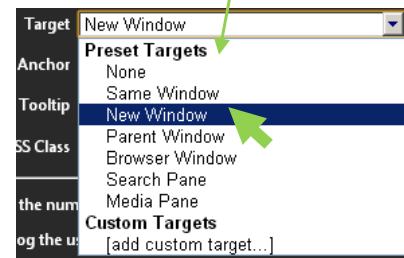
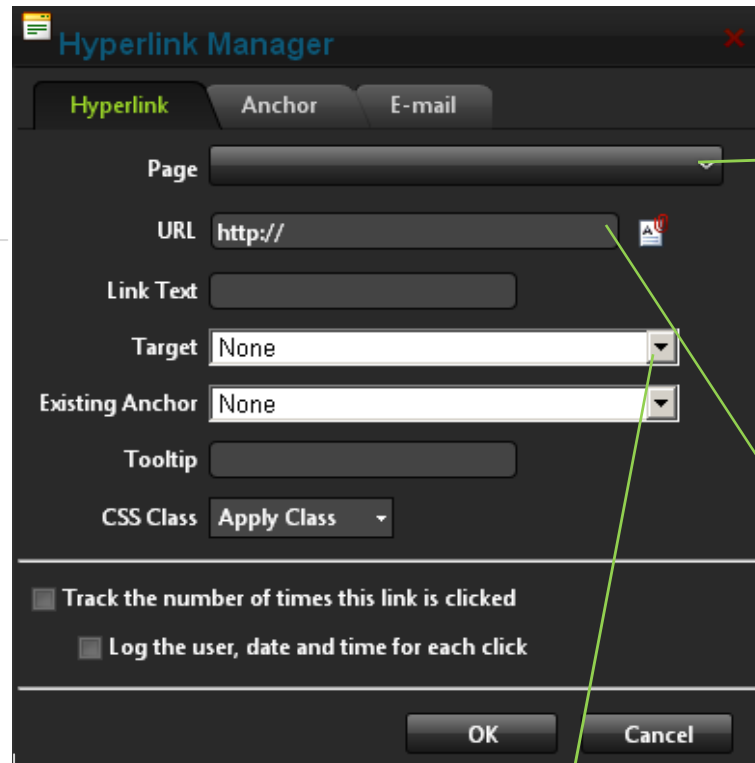
### Deleting a Link

#### Option One:

1. Select the linked text or object.
2. Click the Remove Link button.

#### Option Two:

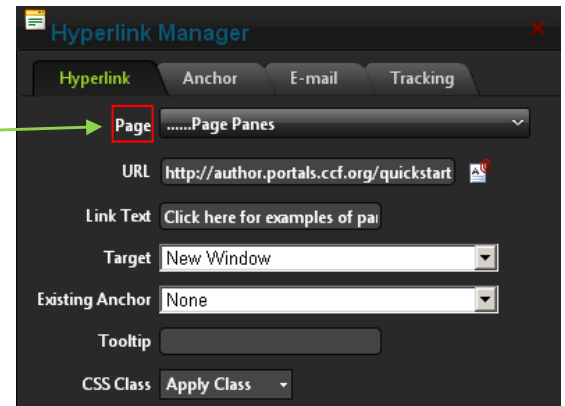
1. Right-click on the linked text or object.
2. Select Remove Link from the drop down list. This opens the Hyperlink Manager.



Whether you are creating a page link or just a simple URL link set your "target" to open in a new window.

### Page Link

Select the page for this link from the drop down list. This displays the URL of the selected page in the URL field below. Note: Disabled pages appear in the list, however they cannot be selected.



### URL Link

Make a URL link on your page in the URL text box, and enter the URL address for the link.

